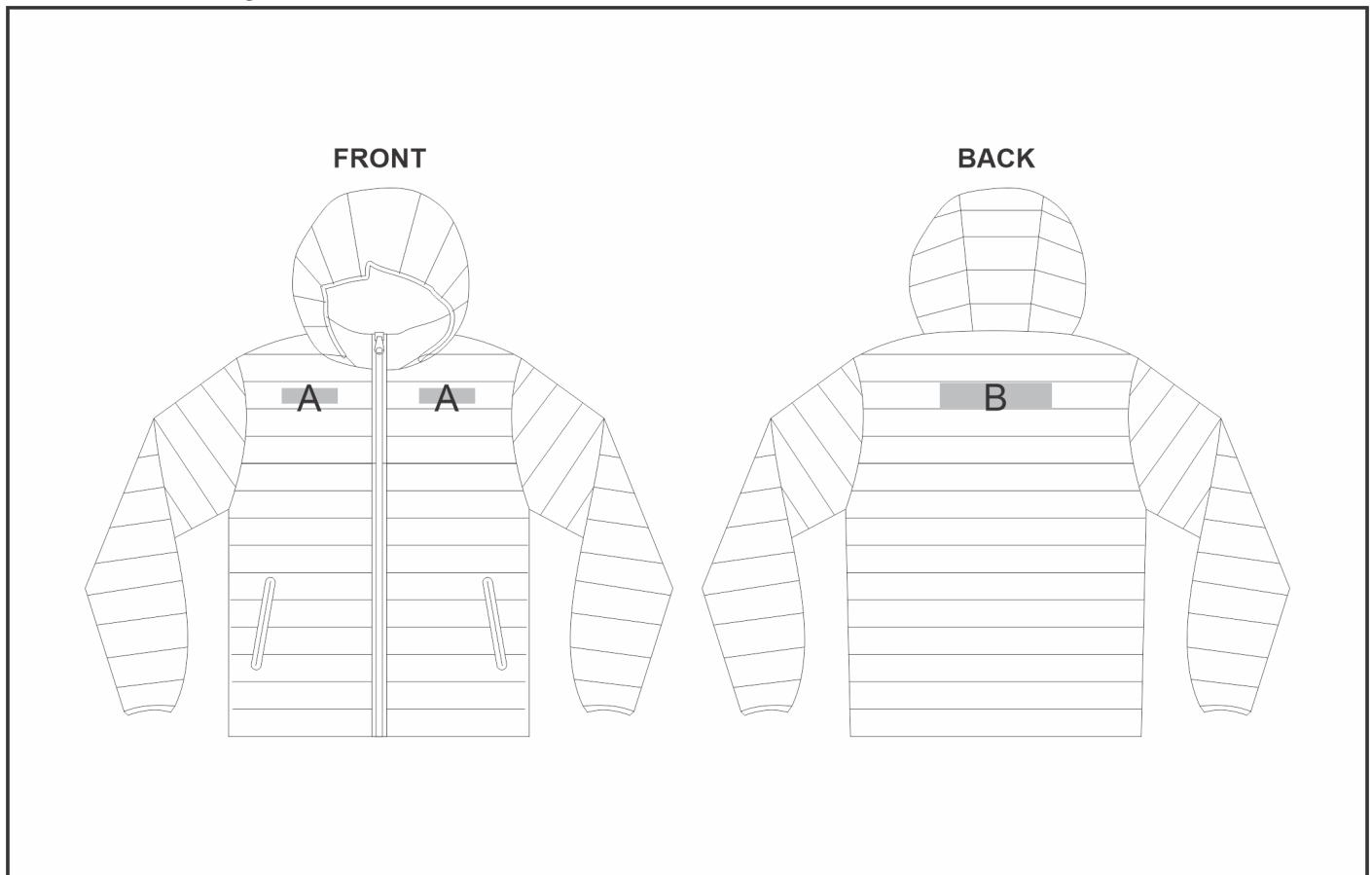


JC-SL-108-A

Ladies Kyoto Jacket



Need to know:

- Includes 1-Position Embroidery (setup fees apply)
- Cannot guarantee a 100% straight branding on any clothing item with check or stripe detail.
- The panels on the garment are inconsistent from Small to XL.
- The logo will be branded in the closest left / right chest and back panel, to the standard left/right chest and back position.
- EMB Inclusive Parameters: Left/Right Chest or Back = 100mm x 100mm.

Branding Options:

Position A

1. Embroidery (EM-CLOTHING)
N/A
Size: 100mm wide x 35mm high

Position B

1. Embroidery (EM-CLOTHING)
N/A
Size: 200mm wide x 35mm high